



## DECEMBER 2008 NEWSLETTER

Welcome to the December Newsletter.

### **TRIPARTITE COMPETITION 2008-9**

On Monday 8<sup>th</sup> December TPS had a very enjoyable trip to Sevenoaks for this year's Tripartite Competition. The details of our panels, and their scores were:

#### Projected Digital Images

Abseiling Windows	John Taylor	15
Clown Fish	Maria Kjellen	18
Dylan	Paul Knivett	18
Ferris Wheel	Brian Smith	16
<b>Puffin and Sand Eels</b>	<b>Linda Dance</b>	<b>20</b>
Sacha	Linda dance	16
Squeaky Beach	Paul Knivett	15
<b>Too Close</b>	<b>Mike Crisp</b>	<b>19</b>
<b>Sevenoaks Total 139</b>	<b>Selsdon Total 142</b>	<b>Tandridge Total 137</b>

#### Prints

<b>Vision of Childhood</b>	<b>Linda Dance</b>	<b>20</b>
<b>Graffiti or Art</b>	<b>Carole Mills</b>	<b>19½</b>
<b>Greetings from Fuengirola</b>	<b>Brian Lavery</b>	<b>20</b>
Tall Order	Marcus Scott-Taggart	16½
<b>Hong Kong Street Signs</b>	<b>Marie-Ange Bouchard</b>	<b>19</b>
After Canaletto	Nick Withers	20
Karnak Temple Guide	John Howard	15
<b>Early Morning (etc.)</b>	<b>Brian Wreyford</b>	<b>19</b>
<b>Sevenoaks Total 140</b>	<b>Selsdon Total 139</b>	<b>Tandridge Total 149</b>

**The Grand Totals:**    Sevenoaks 279    Selsdon 281    **Tandridge 286**

### **SURREY PA AGM**

At the Surrey Photographic Association's AGM last month the following people were elected to the SPA Committee:

<b>Chairman</b>	- Tony Riley	- Capel
Vice Chairman	- Tony Charters	- Woking
Hon. Secretary	- Tony Troman	- Epsom
Treasurer	- Walter Benzie	- Guildford

**Committee Members:**

Marcus Scott-Taggart	- Tandridge
Gordon Roots	- Bookham
Rosemary Wilman	- Epsom
Alan Barrett	- Guildford
David Drummond	- Mitcham
Philip Quarry	- Kingston
David Chiverton	- Capel
Ex Officio: Jay Charnock	- Richmond & Twickenham, Immediate Past Chairman

David Chiverton is taking on the Inter-Club Competition responsibilities.

## **SPA INTER-CLUB COMPETITION 2009**

The SPA will shortly be issuing the Inter Club Competition Rules for the 2009/10 season, **there will be two major changes starting in September 2009:**

- 1: **Digital Projected Images will replace conventional film slides.**
- 2: **The first round draw, into groups of four clubs, will continue as before but now all four clubs will meet on one night at a single venue and compete in a single competition.** The TWO highest scoring clubs in each group, in both prints and projected digital images will progress into the second round, which will again be fought as groups of four competing on a single night at a single venue. Only the highest scoring club from each of these second round contests will go forward to the finals.  
This means that, assuming 32 clubs enter, there will be two rounds and one final.

The Judges for all competitions will be appointed by SPA's ICC Committee. The SPA will also pay their expenses.

### PLATE COMPETITION

It is SPA's intention to hold a Plate Competition in which all clubs that enter the Inter-club, but do not qualify for the final, may compete. As this will not take place until close to the end of the 2009/10 season SPA will issue more information about this once the main competition is organised and under way.

David Chiverton, SPA ICC Committee Chairman.

### What The Duck



## **MORE USEFUL RESOURCES**

### **DEAD OR DYING EPSOM PRINTER?**

Recently I had a problem with my Epson 1290 printer. It's quite old but I like the prints it produces so it was decision time – a new printer or see if anyone out there was interested in looking at it. I looked at the cost of replacing it and then took it to:

Evolution Office Supplies Ltd  
Progress Way  
Croydon CR0 4XR  
Tel. 020 8686 0046  
[www.evolutionofficesupplies.co.uk](http://www.evolutionofficesupplies.co.uk)

I found them on Epsom UK's website. They are an authorised Epsom dealer.

They quickly diagnosed it was a print head problem. They charged £45+VAT to look at it and £90+VAT to replace the head with a genuine Epsom part.

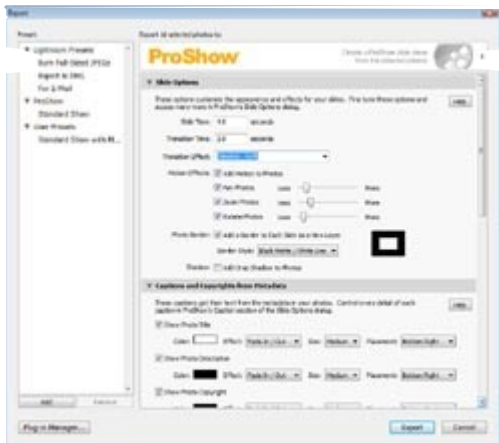
The service I got was impressive and usually they turn around repairs in 2 days subject to being able to get parts.

The quality of the prints it now produces is excellent.

Regards *Gerard*

## **PROSHOW PLUG-IN FOR LIGHTROOM**

Photodex Corporation have released the ProShow Plug-in for Lightroom, a free tool that seamlessly exports professional slide shows from Lightroom to ProShow in a few simple steps, simplifying a photographer's digital workflow.



The ProShow Plug-in allows photographers to quickly and easily set-up slideshows in Lightroom and export directly to ProShow Gold or Producer. The plug-in provides instant access to ProShow's core functionality and simplifies the process of resizing images and moving them to use in a slideshow. Inside Lightroom, photographers can create a customized slideshow from a group of images complete with motion effects, transitions, photo captions and more.

Photographers can also take advantage of the plug-in's ability to add captions and copyright information from metadata. Proofing shows, that include an image name and copyright, can be instantly created saving photographers valuable time.

"This integration allows photographers to move from image management to image showcasing in a few simple steps", said Paul Schmidt President and Founder of Photodex Corporation. "We are always looking for ways to simplify workflow for our customers and this plug-in does exactly that."

Once exported, slideshows can be further enhanced in ProShow. Photographers can fine tune motion effects, add custom intro and credit slides, add a soundtrack and more. Shows can then be output to over 40 formats including DVD, Blu-ray, Flash, YouTube and dozens of devices like the iPod and Blackberry for on-the-go solutions.

The ProShow Plug-in for Lightroom is a free tool that can be downloaded directly from the Photodex website at: <http://www.photodex.com/>



## **PORTRAIT PROFESSIONAL SOFTWARE**

If you enjoy taking portraits and occasionally want to remove the odd wrinkle, spot, etc. from your subject without spending ages in Photoshop, try Portrait Professional (free download from [www.portraitprofessional.com](http://www.portraitprofessional.com)). After trying it on a couple of my images, I bought it without hesitation. The simple slider controls allow you subtle manipulation of all manner of details including face and mouth shape, wrinkles, pores, blemishes, eye colour and hair shine. I'm not advocating using this piece of software on every portrait, however everyone has their 'rough' days and your female subjects especially are sure to appreciate the extra sensitivity your photographs will possess. It is very reasonably priced too.

Regards *Paul*

## **CHINESE WHISPERS 2009?**

It has been suggested that it's about time for another round of Chinese Whispers.

(For newer members – This is a photographic version of the Chinese Whispers game, where, instead of people whispering a sentence to one another along a line, participants take a photograph and pass that along the line. The each person attempts to take a photo 'inspired' by the one they received. When all members have produced a photo, the 'chain' is assembled for viewing.)

If enough members are interested (**do let me know asap**) we will start another round early in 2009.

I suggest we keep the 'rules' of the 2008 round:

- Keep it digital.
- Keep the 3 day time limit on producing the new image – ie you MUST pass on an image in 3 days. If you are unable to produce a new image you pass-on the one you received.
- We ask a non participating member to select the original image – say from a magazine or paper.

The 2008 round results can be seen at: <http://tinyurl.com/5skjbo>



## **OUT AND ABOUT**

### **A PERSONAL VIEW – THE ANNIE LIEBOWITZ EXHIBITION**

The exhibition is on now, at the National Portrait gallery, adjacent to the National Gallery, until Feb 1<sup>st</sup> 2009. I visited it recently; the cost is £ 10.00 for concessions, but I was charged £ 5.00 on showing my RPS card. There are several accompanying talks and tours, on various dates.

I would say this is a must for all photographers. It follows Ms Liebowitz's life for the fifteen years as above, though there is an accompanying book (£20.00) which catalogues her life right from 1970, when she photographed John Lennon.

It has a wonderful mixture of professional and family pictures. The family pictures are exactly the same as we would all take, and include central horizons, dark areas etc.- all very encouraging. But she has also taken some of the best known portrait photographs of our time.

These include the whole George W. Bush team, Bill and Hilary Clinton, Nicole Kidman, Demi Moore when pregnant, and many others. They are all stunning photographs. The one thing all the portraits have in common is a very powerful impact. They are taken in a variety of poses, all very clever and appropriate, and have beautiful lighting. I was struck by the fact that about half the pictures in the exhibition are in black and white – it is clearly a thriving medium, and certainly fits powerful pictures of people. In addition there are pictures of the siege of Sarajevo, also with great impact.

The exhibition not only exhibits a lot of excellent portraits, but has shown, in an adjacent room, the several hundred pictures, from which the photographer selected the pictures for the exhibition. These are all small, none larger than A4, and it is fascinating to wonder about the selection criteria of an expert.

I recommend it to you all,

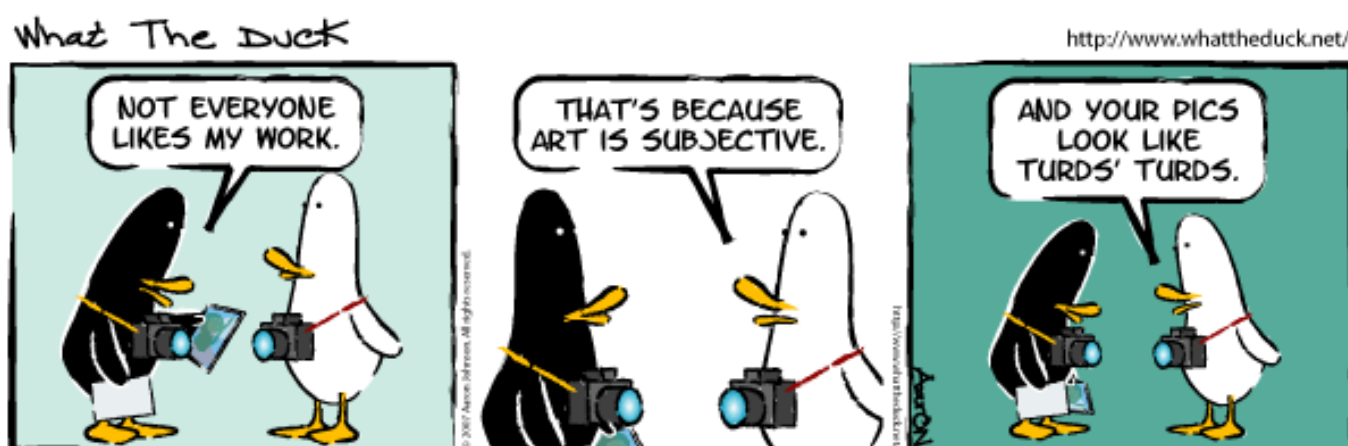
*John Nathan* LRPS.

## ANOTHER PERSONAL VIEW – THE LANDSCAPE PHOTOGRAPHER OF THE YEAR EXHIBITION

This exhibition is on now, in the National Theatre's Lyttelton Foyer – see below for details. There's a large collection of very good landscapes on display – all printed large, including those taken with mobile 'phone cameras!

You could be forgiven for coming away thinking that you have to venture to Scotland for good landscapes – there are not many taken in the South East. There are plenty of stunning photo's.

It's free and well worth a visit. *Steve*



## MASCALLS GALLERY - LEE MILLER PORTRAITS

Lee Miller Portraits will be at Mascalls Gallery,

Address: **Mascalls Gallery, Mascalls School, Maidstone Road, Paddock Wood. Kent TN12 6LT**

Dates: **From 3 November to 13 December**

Admission: **free.**

Opening times: **Monday to Thursday 10am to 5pm, Friday and Saturday 11pm to 4pm.**

### **Portraits of the 20th Century Greats**

Exhibitions of photographer Lee Miller have recently graced the walls of London galleries including the National Portrait Gallery and the V&A, but will soon be found closer to home at Mascalls Gallery in Paddock Wood.

Lee Miller was a model much-loved by the greatest artists of the twentieth century. However, over the course of her career she moved from behind the camera to becoming a pioneer in the darkroom and then emerging as a photographer with extra-ordinary talent. This exhibition at Mascalls Gallery brings together the portraits that she created through her fascinating life. We see her at home on Farley's Farm in East Sussex surrounded by the likes of Picasso, Magritte, Dylan Thomas and Stravinsky. Her photographs also take us to the front line of the 2nd World War where she was one of the first female reporters and where she presents portraits of the people she meets with an insight that is both sympathetic and penetrating.

Mascalls Gallery is a unique venue funded by the Specialist Schools and Academies Trust through Mascalls School a visual arts college. Visitors who take that journey up the school drive will be rewarded by the quality of work on show at this art gallery. It becomes clear that this is not just a school gallery when you see that since opening in 2006, Mascalls Gallery has brought to West Kent work by L. S. Lowry, Henry Moore, Richard Hamilton and leading artists and designers from Latin America, Japan and Africa.

Nathaniel Hepburn, Curator of Mascalls Gallery sums up the importance of this exhibition: "Lee Miller lived during a time of both catastrophic disaster and immense creativity, and her combination of daring and genius has left us with an inimitable record of those who she met along the way."

For further information contact the Gallery on 01892 839039 or on-line [www.mascallsgallery.org](http://www.mascallsgallery.org)

## **LANDSCAPE PHOTOGRAPHER OF THE YEAR 2008 EXHIBITION**

Exhibition dates: **November 18th 2008 to January 17th 2009**

Times: **Mon to Sat - 9.30am to 10.30pm, Sun 12 - 6pm**

(excluding Bank Holidays, 21st, 28th Dec - check for details)

Admission: **free.**

Venue: **Lyttelton Foyer, National Theatre**, South Bank, London SE1 9PX 020 7452 3400

**Seeing Landscapes - Charlie Waite talks:** To tie in with the exhibition, renowned landscape photographer, Charlie Waite, will give four talks at 11.30am on the 8th & 9th December 2008 and the 5th & 6th January 2009. Tickets: £5.00 from the box office.

## **2009 LONDON PHOTOGRAPHIC CONVENTION**

An invitation to everyone who is interested in photography!

Venue: **Novotel London West**

**Dates: 16th -18th January 2009**

Photographers are in for a real treat at the 2009 London Trade show and Convention - not only will all the latest photographic equipment, products and services be on show, attendees will also be able to capture their own images on our special studio stages...

Throughout the Trade Show floors there will be live stages for photographers to take pictures of our models and props, creatively lit and with expert help on hand for attendees to get instruction and also capture the very best images.

We will also be providing actual photography demonstrations that photographers can utilize in both everyday and professional photography.

**300 Seat lecture Area:** Attendees are able to attend FREE 45 minute lectures by many of the leading lectures in the photographic industry over the three day Trade Show.

Subjects cover such topics as: Portraiture, Marketing, Adobe Photoshop, Digital Imaging, Landscapes, Architecture, Weddings, Fashion, Events, Lighting and much more...

**Pre registration is essential** to gain **FREE** access to this event - <http://www.swpp.co.uk/convention/>

So don't forget to bring your camera and come away with some great images.

Organised by the 'Society' (SWPP, SINWP, SICIP, SITTP, SISLP, SIMPP & BPPA).

## **CHRISTMAS PRESENTS**

### **NIKON D3X or SONY A900 for CHRISTMAS?**

The battle for pixels goes on. This link might help you decide which is for you: <http://tinyurl.com/6dbcdx>

## **TPS MEMBERS' GALLERIES**

For first round of this year's PDI Competition we had 60 entries from 20 Members.

However, our WEB Gallery section has only 8 members represented . . . It would be great to have more members represented. You already have the images! How about submitting a few to Brian S. for inclusion?

*Thanks for reading, and Happy snapping,*

*Steve*

*11th December 2008*

*PS Don't forget, this is YOUR News Update, and I welcome any contributions from members. Send me your: comments, idea's, articles, events, exhibition details, etc. Send all contributions to: [tps@elms42.freereserve.co.uk](mailto:tps@elms42.freereserve.co.uk)*

The views expressed in this Newsletter are not necessarily those of Tandridge Photographic Society which takes no responsibility for statements made in any article in this newsletter or for any matter arising there from.